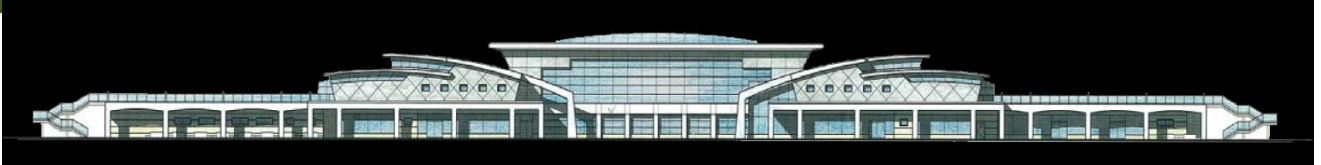


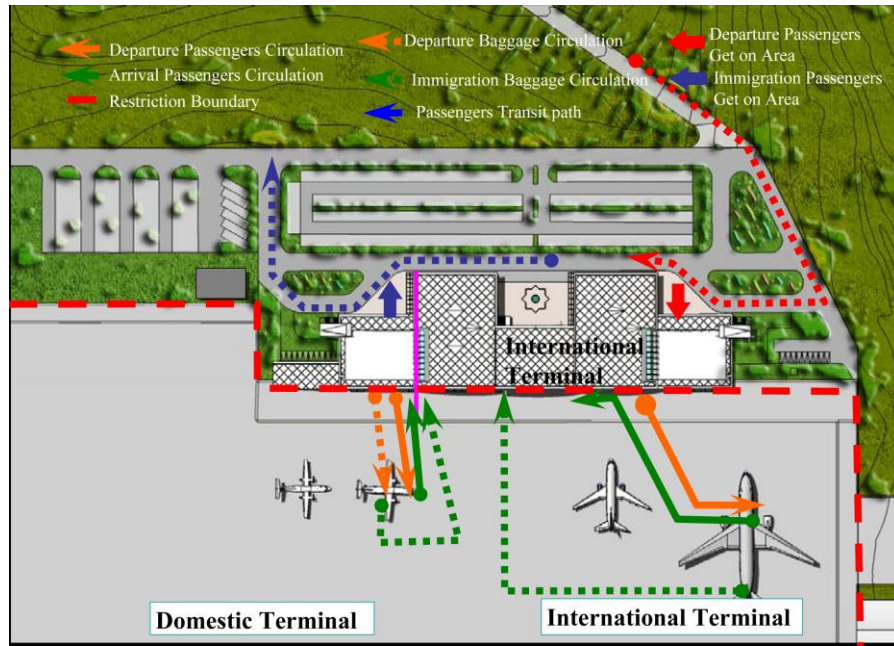
ARGYLE INTERNATIONAL AIRPORT

LANDSIDE FACILITIES

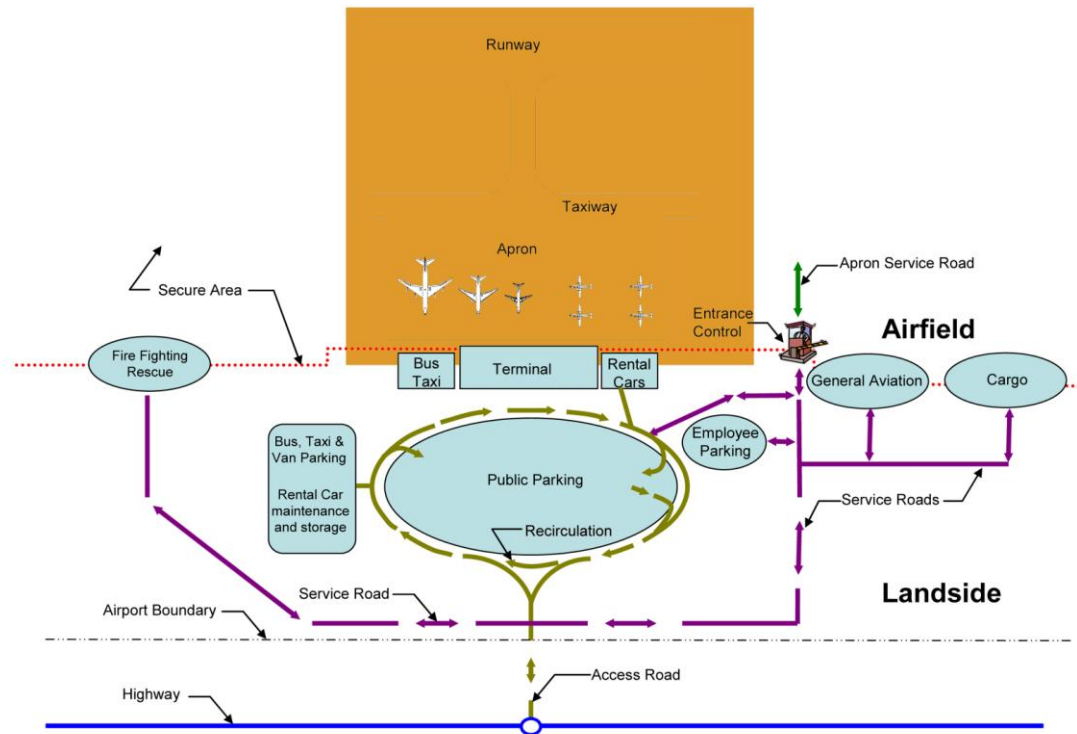
Preliminary Designs



Traffic Circulation of Terminal



Schematic Roadway System



There is a public parking area for more than 265 vehicles. Commercial parking space is nearby and provides enough positions for 6 full size buses, 10 mini vans, 50 taxi cabs and 40 car rental vehicles. Two airport employee parking lots are located on both sides of the passenger terminal building. There are trees to provide shade for cars and Indigenous palms, shrubs and flowers to create a delightful and relaxed feeling .

Concepts Underlying the Designs of the Passenger and Cargo Terminal Buildings and Other Landside Facilities



The overall objective of the Design Consultant’s Contract is to design functional, efficient, safe and cost effective passenger and cargo terminal buildings and associated facilities that provide a pleasant experience to all persons using these facilities. Within this overall objective, there are several specific objectives the design programme must meet. Five of the most important are:

- (1) **Passenger Experience** - The passenger terminal building must provide the international passenger a pleasant and distinct “front door” experience to St. Vincent and the Grenadines.
- (2) **Functional Efficiency**: The facilities must be designed to allow for the most efficient movement of aircraft, departing, arriving and connecting passengers and their baggage, and the efficient handling of cargo.
- (3) **Environmental Sustainability** - The passenger and cargo terminals must be planned, designed and constructed in such a manner that they can be operated in an environmentally sustainable manner to lower their life cycle operating cost and to stand out as models of good stewardship to the environment.
- (4) **Future Flexibility**: The terminals and all landside facilities must be planned and designed to be flexible, adaptable to expansion, and accommodating of the inevitable future changes or developments in the aviation industry and passenger and aircraft movements in St. Vincent and the Grenadines over the long term.
- (5) **Safety and Security**: The terminal buildings and facilities must be designed in a manner to provide for safety and security during operations in accordance with the International Civil Aviation Organisation’s Annex 17.

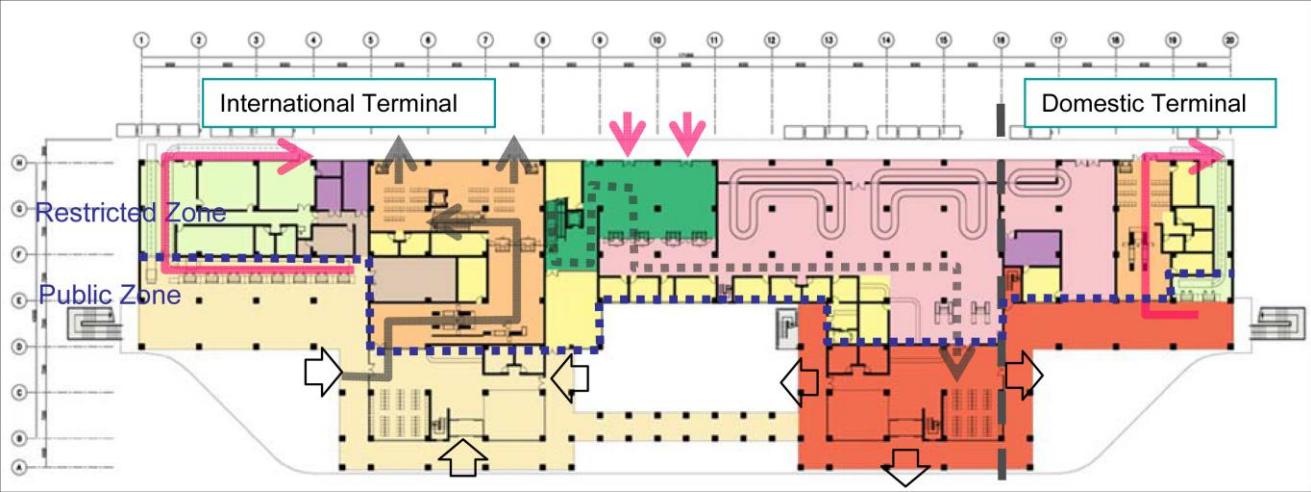
These objectives are understood against the background of St. Vincent and the Grenadines as a nation state, its location in the Caribbean Sea with plenty of sunshine and beautiful beaches, and its emerging engine of growth being the tourism sector.

The designs of the passenger and cargo terminals buildings seek to transfer into architectural language, images of the sea waves, sea shells and wings of the

sea birds, as well as the colours of our national bird and national flag. These



Floor plans



Ground Floor

The ground floor is divided into the departure area and arrival immigration area. The departure concourse is the ticketing and checking in for passengers. Beyond this area, there are the secured areas for immigration, security checks, duty-free shopping, departure lounge and an airline executive lounge. On the arrival side, there are areas for passport control (immigration), baggage clearing, with limited duty free shopping, customs and a meter-greeter area.

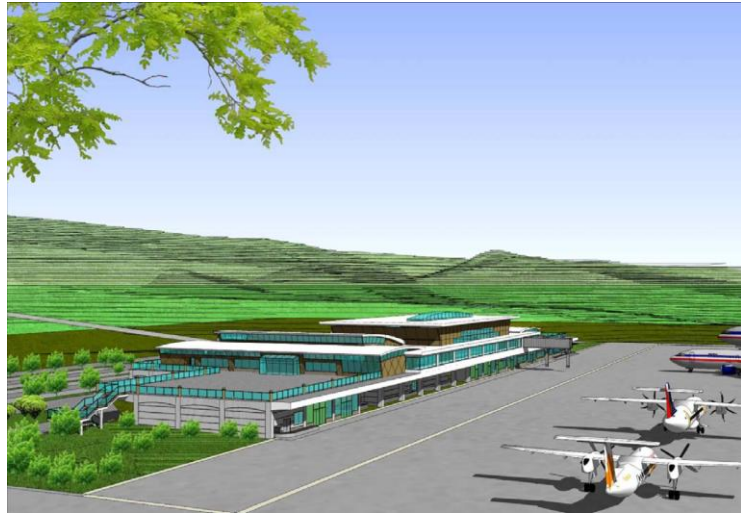


First Floor

Design Options for Passenger Terminal Building

Design Option 1

Airside View



Landside View



Landside View



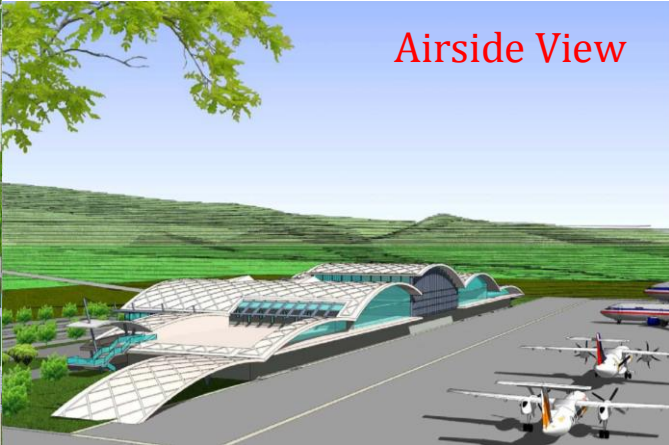
Airside View

Design Option 2

Top View

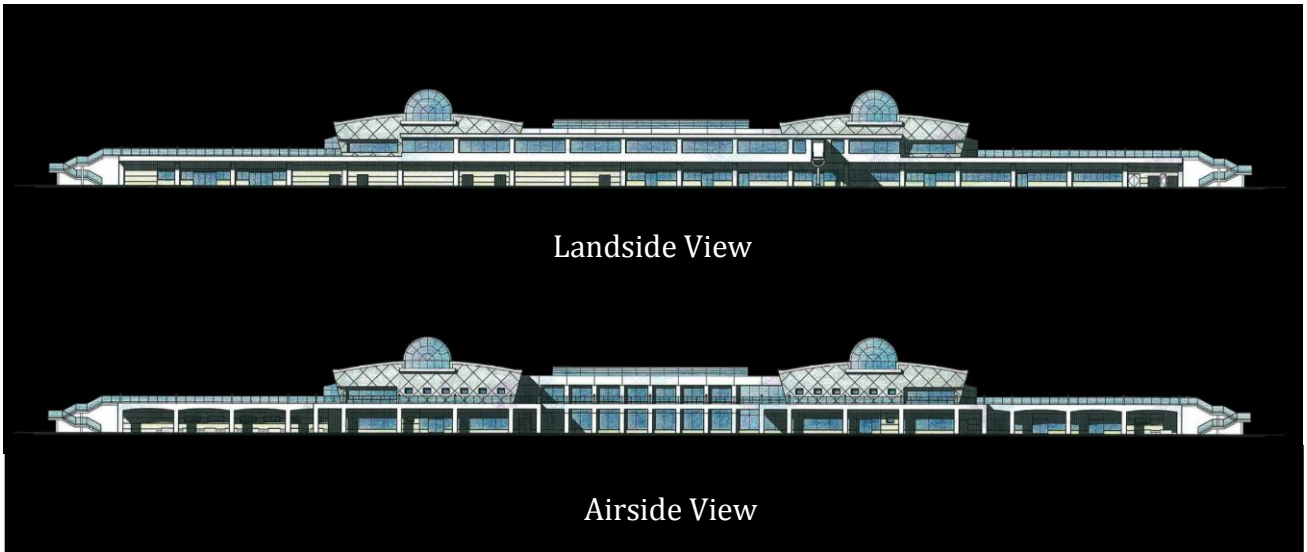


Landside View

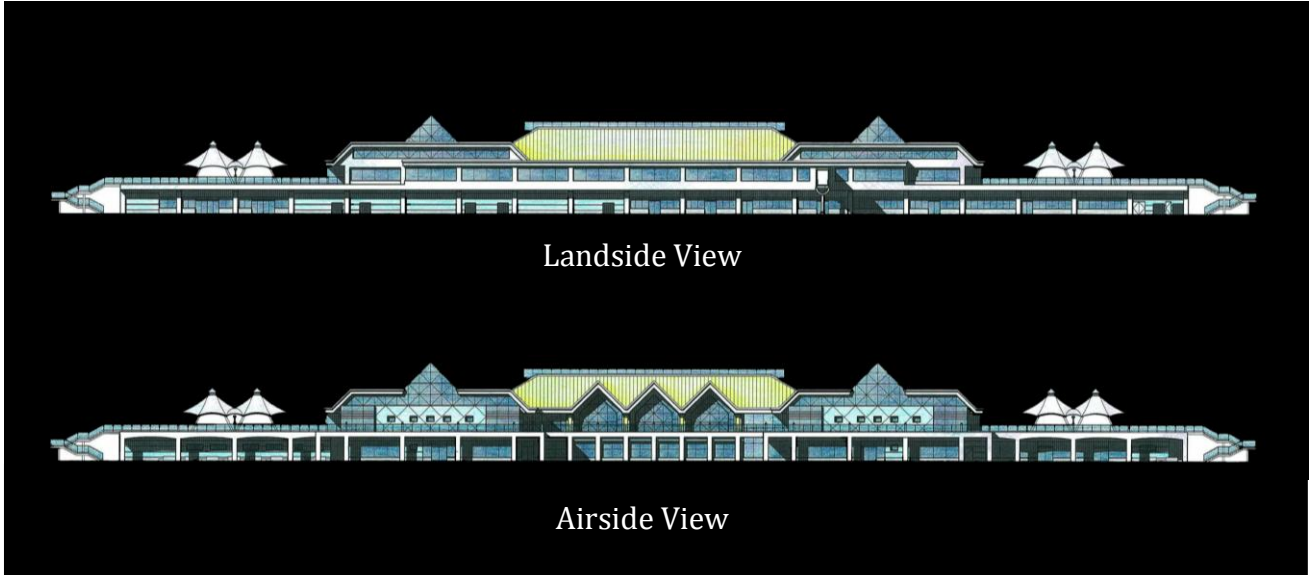


Airside View

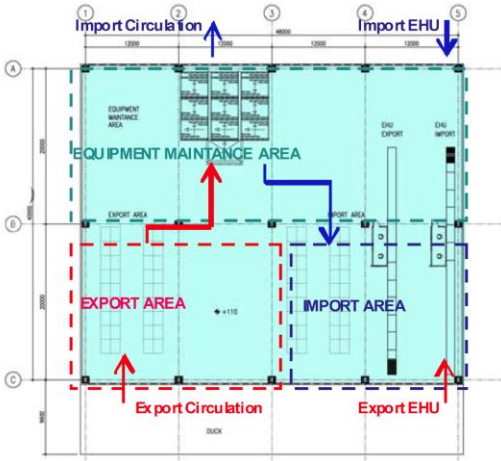
Design Option 3



Design Option 4



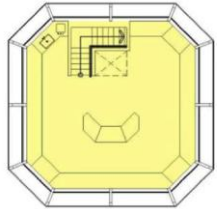
Cargo Terminal Building



Cargo Terminal Floor plan



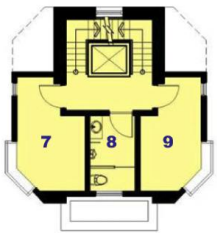
Cargo Terminal Perspective



Control Tower

1. EOC
2. Equipment Maintenance and Storage
3. Kitchen
4. Bath
5. Dinette
6. Restroom & lockers
7. Controller Supervisors office
8. Toilet
9. Technicians office

Air traffic Control



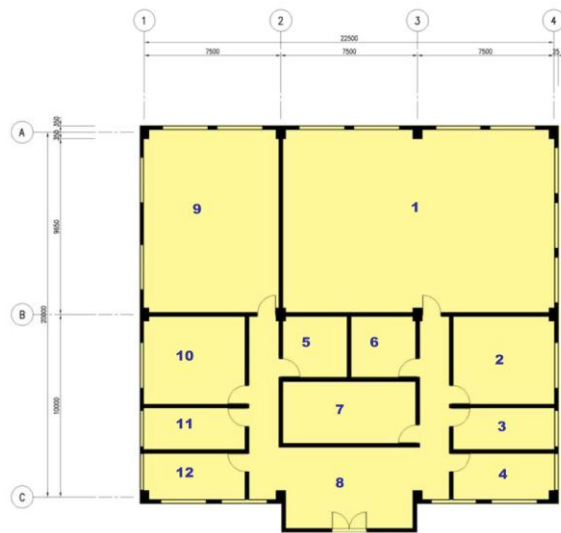
Supervisor & Techn Office

Emergency operation Centre



Control Tower Perspective

Aircraft Fire Fighting and Rescue Station



- 1. Apparatus**
- 2. Storage**
- 3. Alarm room**
- 4. Fire Chief office**
- 5. Emergency Storage Supplies**
- 6. Workshop**
- 7. Training Room**
- 8. Lobby**
- 9. Dormitory**
- 10. Locker and Wash Room Facilities**
- 11. Kitchen/Dinette**
- 12. Recreation Room**



Fire Fighting and Rescue Station Perspective